



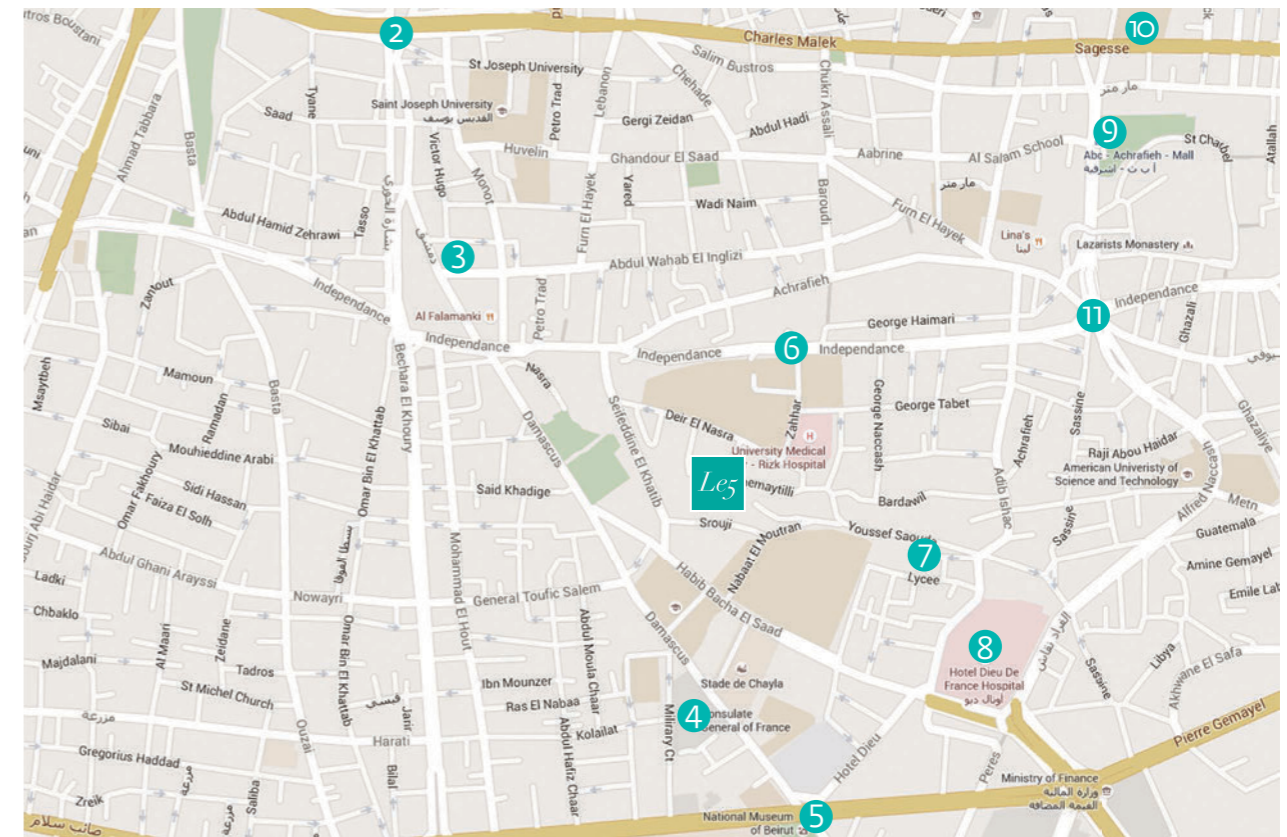
Le5

LES CINQ ACHRAFIEH

Private living in the
heart of the metropolis.

Achrafieh is one of Beirut's oldest and most charming districts and is considered of great historical and touristic importance. A harmonious fusion of modern luxury apartment buildings, renovated traditional houses, restaurants, coffee shops and trendy bars makes Achrafieh the ideal place to live in.

Stonemason Contracting & Development and NSA Architects are proud to present "Les Cinq", an intimate living space in Achrafieh consisting of 4 Duplexes and 1 Simplex. With cutting edge home systems, ultra-modern green architecture and only 4 neighbors, Les Cinq offers you private living in the heart of the metropolis.



- Le5 Building
- 2 Solidère
- 3 Beit Beirut
- 4 French Embassy in Lebanon
- 5 National Museum of Beirut
- 6 Notre Dame de Nazareth School
- 7 Grand Lycée Franco-Libanais
- 8 Hotel Dieu De France Hospital
- 9 ABC
- 10 Sagesse-Beirut
- 11 Sassine Square

4 DUPLEXES 237 m² 1 SIMPLEX 124 m²

Sundeck/Pool	14 th Floor
Duplex 4	12 th & 13 th Floor
Duplex 3	10 th & 11 th floor
Duplex 2	8 th & 9 th Floor
Duplex 1	6 th & 7 th Floor
Simplex	5 th Floor
Gym	4 th Floor
3 Parking Floors	Floors 1, 2 & 3
Technical Storage Area	Basement

HIGH-END SPECS

Glazing (Double, low-E)
Schindler elevator
Car elevator
Fine wood deck & Cladding
Heating
Solar panels
Controllable Sunshades (Optional)

Each apartment has its cellar in the basement.

Note: First apartment is at the 5th floor from street level.

FACADE ELEMENTS

White Facade

To reflect maximum heat
Reduce energy consumption

Wood

To add a warm touch to the facade

Greenery

To add life to architecture

Floor to Ceiling Openings

To get maximum view, light and sun when needed

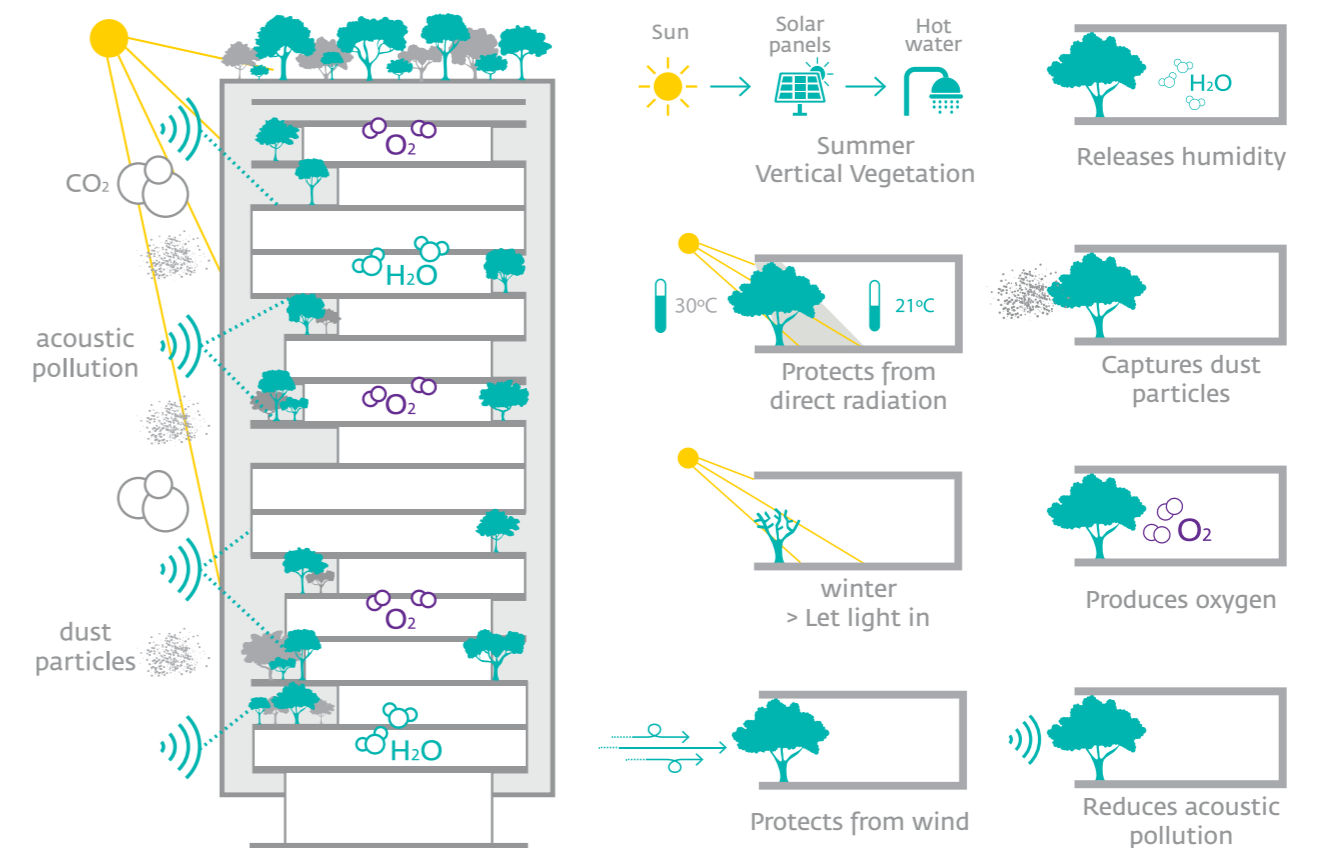
Controllable sunshades (Optional)

To control light, sunrays and privacy to reduce heat/energy consumption



LES CINQ GREEN WALLS

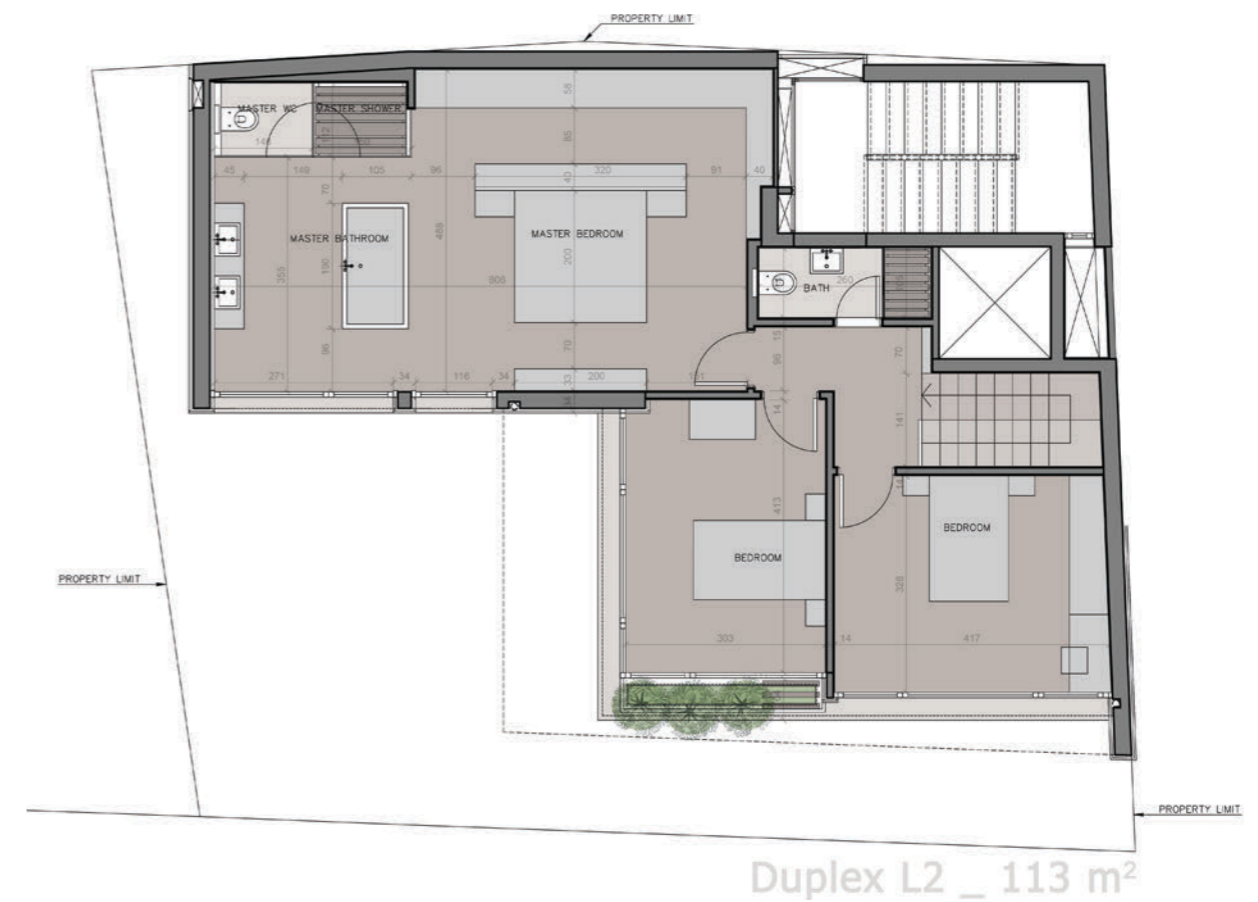
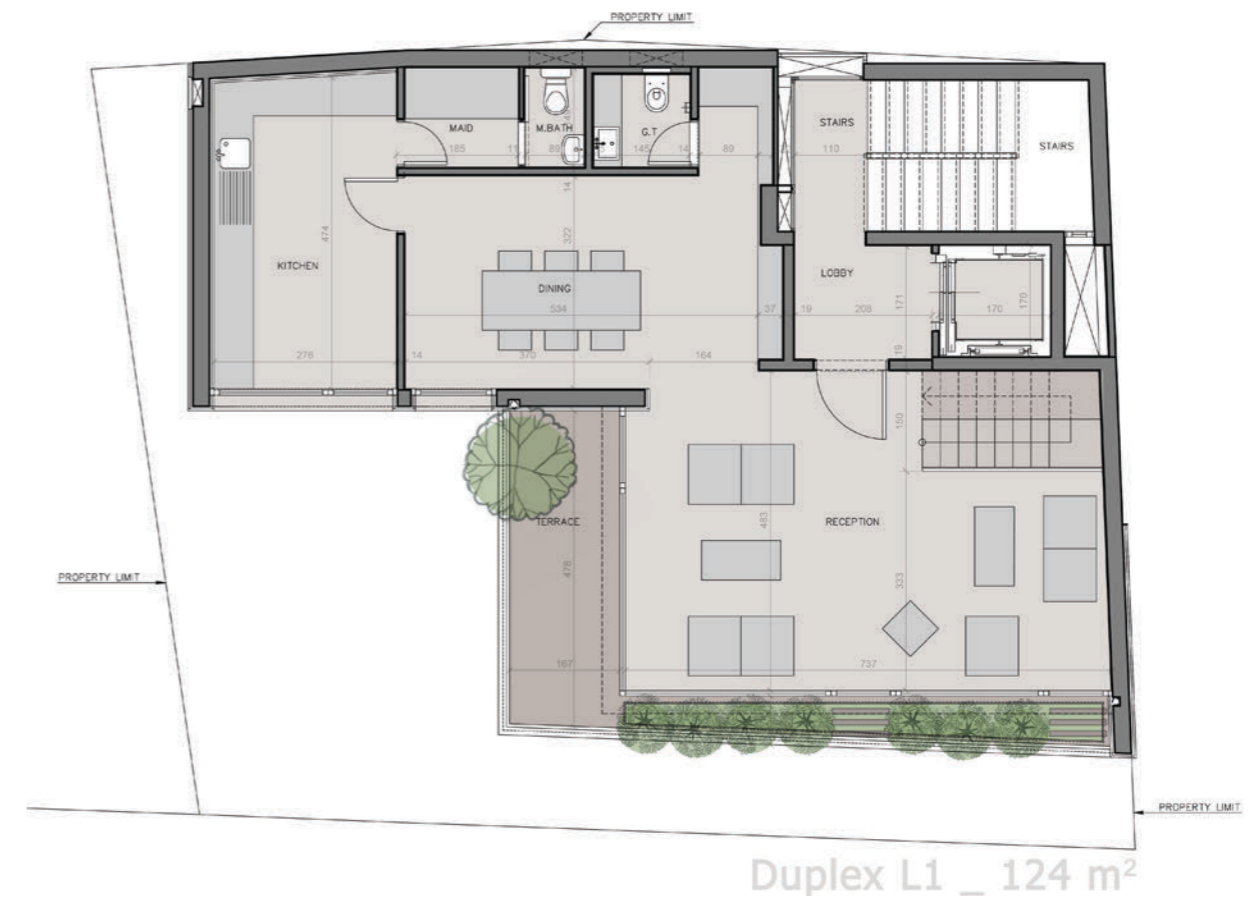
LES CINQ GREEN ENVIRONMENT



SIMPLEX 124 m² - 5th FLOOR



TYPICAL DUPLEX 237 m² 6th > 13th FLOOR



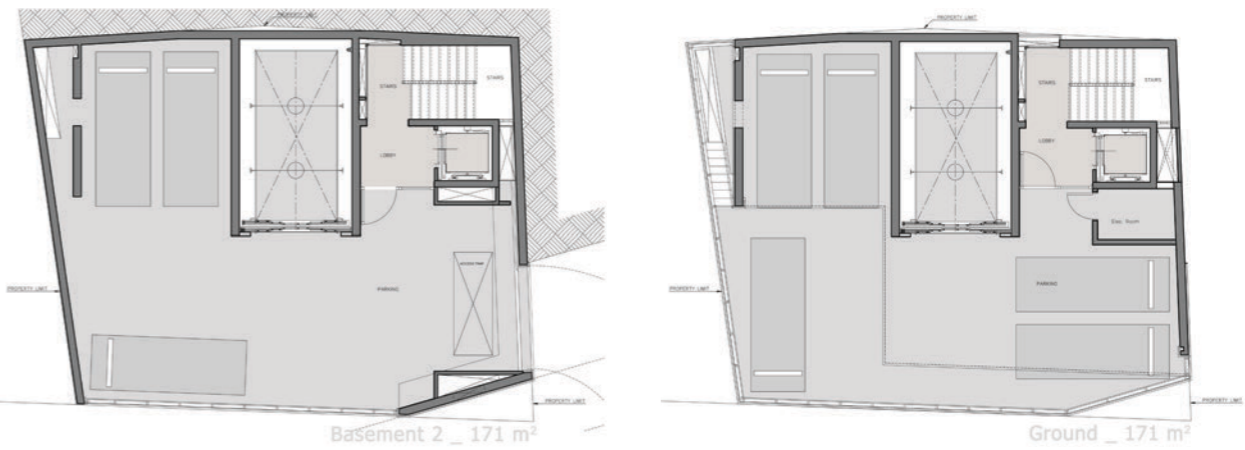
TYPICAL DUPLEX LIVING ROOM



TYPICAL DUPLEX MASTER BEDROOM



PARKING

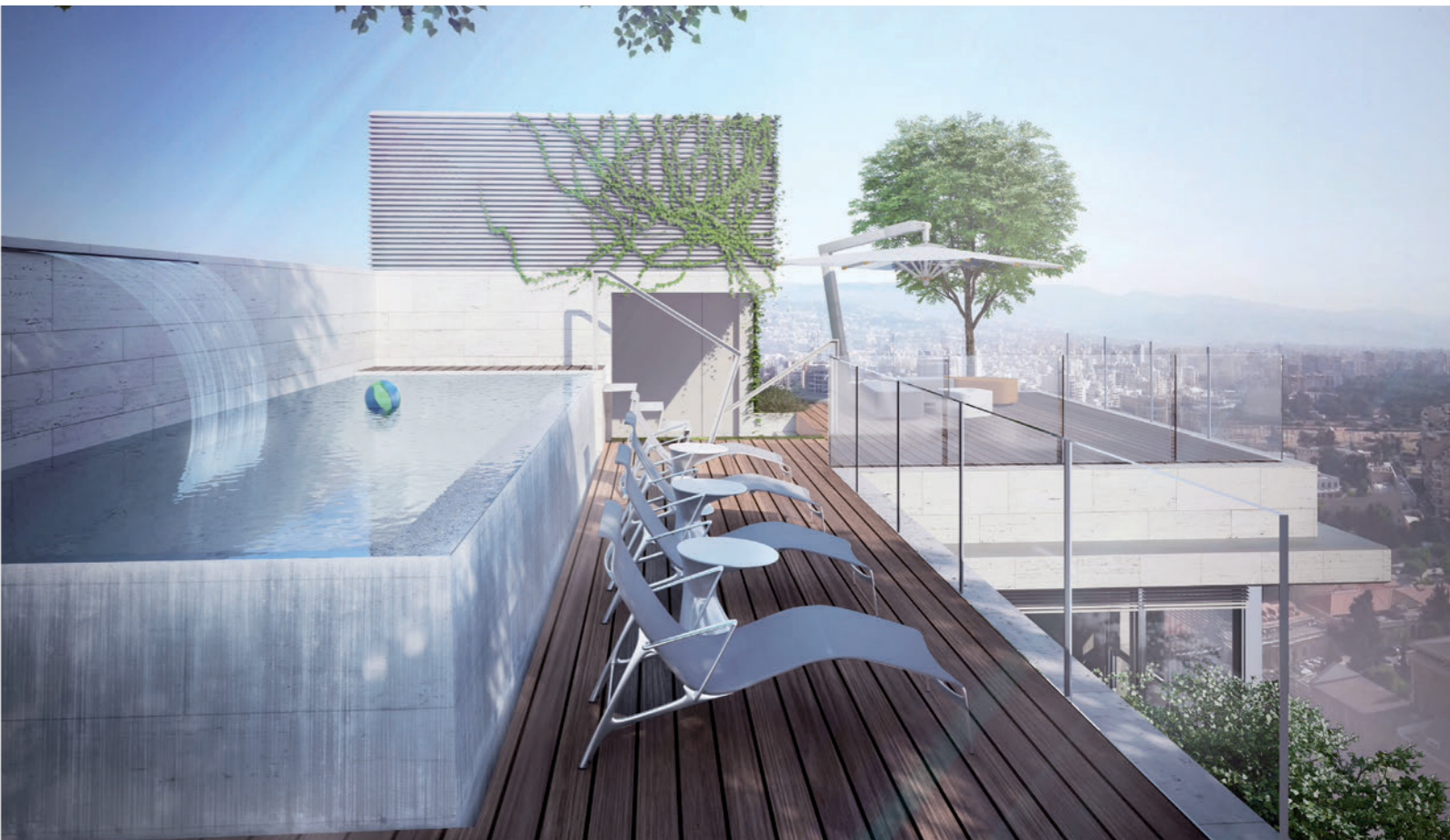
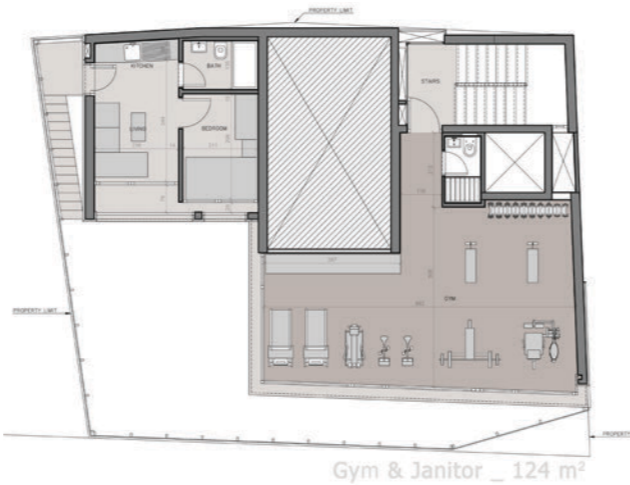


1st floor

2nd & 3rd floor

SUN DECK, BARBECUE, POOL 113 M² - 14th FLOOR

GYM / JANITOR 124 M² 4th FLOOR



5 CONTEMPORARY APARTMENTS

Les Cinq is comprised of only 5 contemporary apartments:

1 simplex & 4 duplexes, 3 Parking floors, 1 technical basement floor, a gym & a Sundeck with pool on the rooftop.

The 5 apartments benefit from the roof top (sundeck - infinity pool - barbecue area) and a gym room on the 4th floor.
4 apartments benefit from 2 car parkings each.
The fourth duplex benefits from 3 car parkings.

SURFACE AREAS

The Simplex

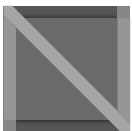
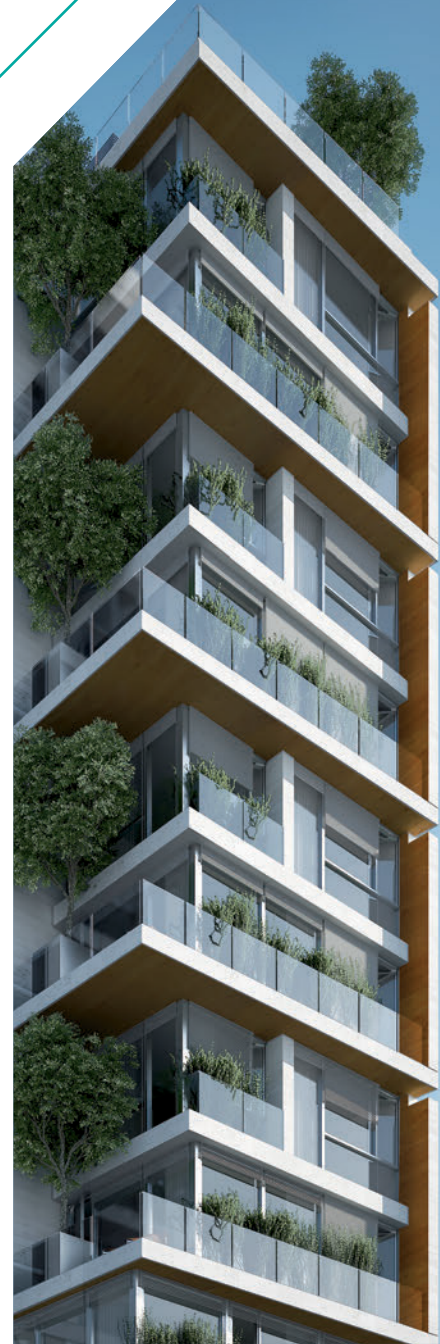
has an area of 124 sqm

The Duplexes

have an area of 237 sqm each

SALES & INFO

call +961 71 777 202



ARCHITECTURE

Naji Sleiman Architects

486 Building 7th floor
Evangelical Brothers Street,
Achrafieh
Tel/Fax: +961 1 202 242
najisleiman@gmail.com



CONTRACTING

Stonemason Contracting & Development

2nd Floor Bristol Galleria, Mme Curie Street, Verdun
Tel/Fax +961 1 743 234
Mobile +961 71 777 202
www.stonemason-me.com
info@stonemason-me.com